

Not all Blades are Created Equal



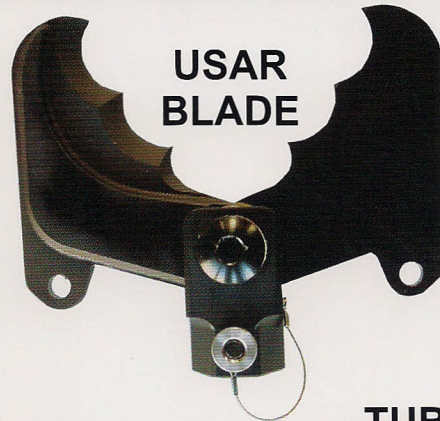
Champion Rescue Tools have developed and patented a very unique style of rescue tool blade.

Our blades start with certified tool steel which is then milled from its original plate state into the structures that will make up the tool blade. These structures are then "laminated" together using a specialized welding process.

Champion laminates their blades to incorporate a patented safety tether into the blade design which would not be possible if we use forged or cast blades. This safety tether design makes for a safer blade if the blade does break under tension or force. See photos

Champion Rescue Tools also incorporates a flat, hardened, steel bearing as part of their blade bolt assembly, which eliminates the need for regular tightening and greasing of the blades.

Safety, performance and longevity is our mission with these special blade designs and we believe that you will see the difference the first time you use our powerful cutter.

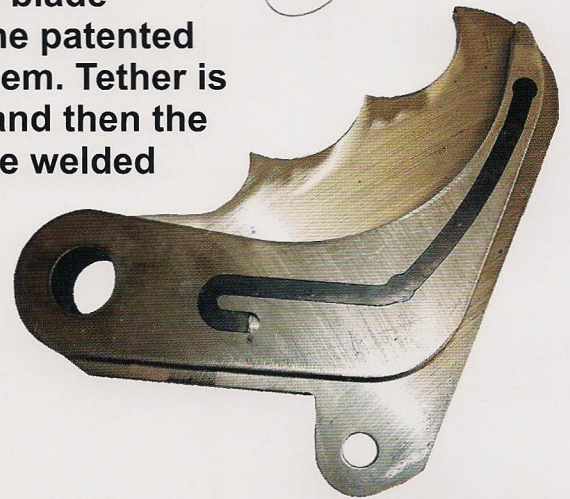


USAR
BLADE

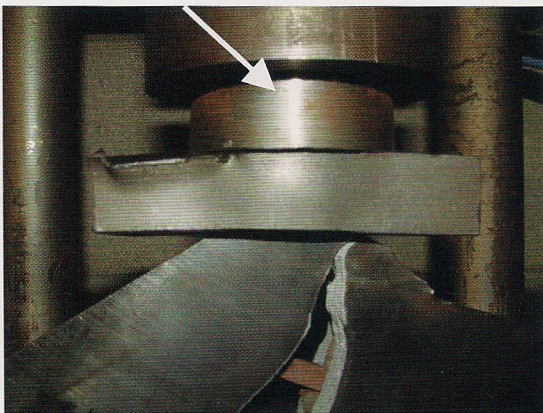


TUBE & BAR
BLADE

Un-welded blade showing the patented tether system. Tether is pocketed and then the two half are welded together.



Test Fixture for Simulating Excessive Force



Safety tether socketed between laminated blades. Tether eliminates blade from becoming a projectile in case of blade overload



Northville MI
800-413-2781
Grand Rapids MI
800-413-4798



CHAMPION RESCUE TOOLS

814 Berry Court • Upland, California 91786 USA

888-396-2426 • 909-982-1126

Fax: 909-982-0500